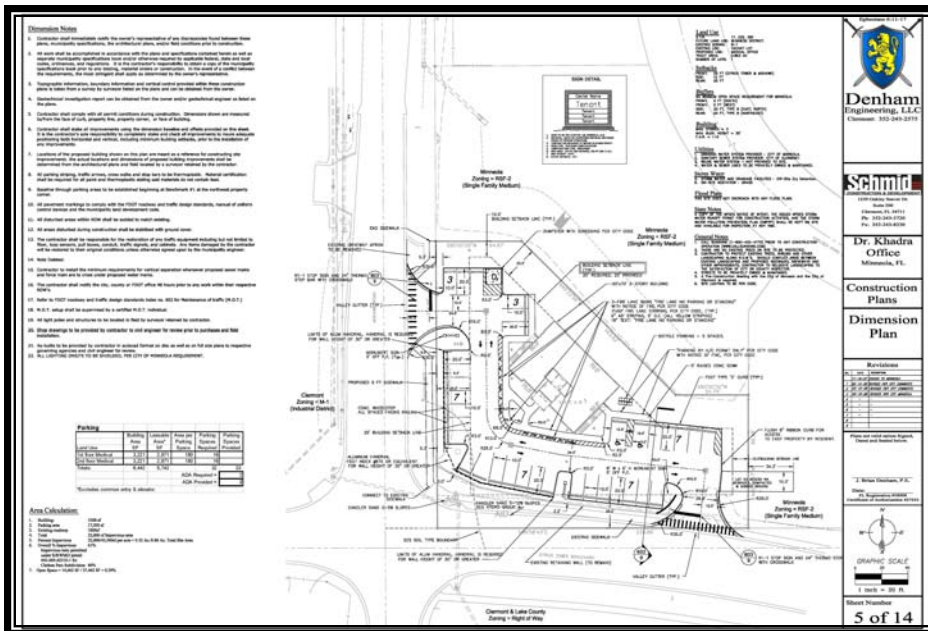


Dr. Khadra Offices

Minneola, FL



Client

Schmid Construction & Development

Contact

Brian Denham, P.E.
407-442-7426

Project Highlights

Location:
Minneola, FL
Project Size:
x AC
x SF Medical Office

Services Included:

- Planning
- Entitlement
- Consulting Engineering
- Storm Water Management Plans
- Utility Plans
- Off-site Water Line Extension
- Civil Engineering
- Permitting

The Dr. Khadra offices are a good example of why community meetings are important to get projects moved past city councils or commission meetings when there is public opposition. A lot of misconceptions were stirred up prior to the meeting, but were allayed when we met with the adjacent community's residents. Though constitutional, property rights alone are not sufficient to get a project moved forward. It takes skill in negotiations, with a good ear for the other side's position and needs, even if not directly stated. Services included entitlement through Minneola (Variance, Site Plan), Clermont, (Utilities), the SJRWMD (Storm Water), & FDEP (Potable Water & Sanitary Sewer).



Denham
Engineering, LLC