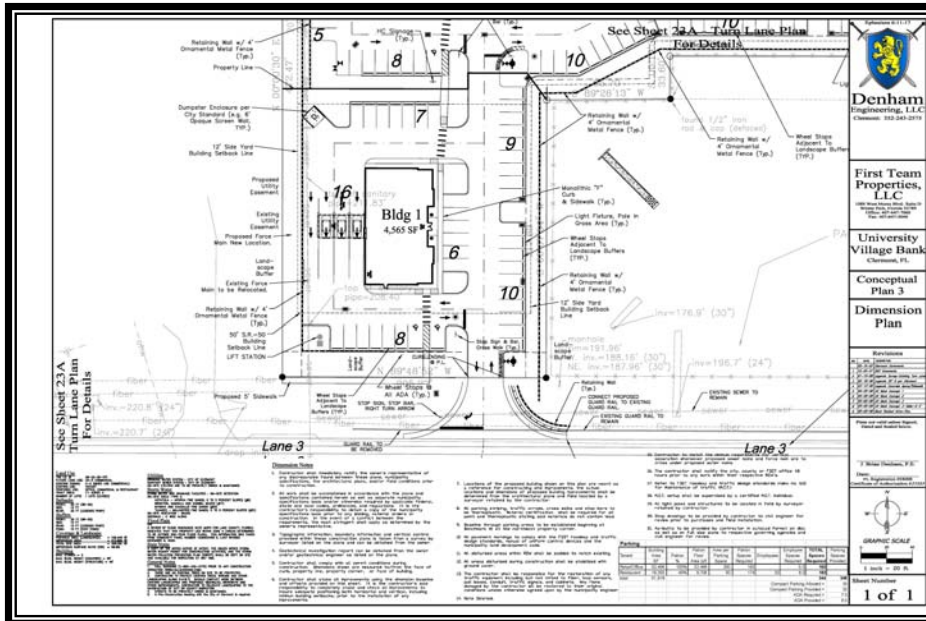
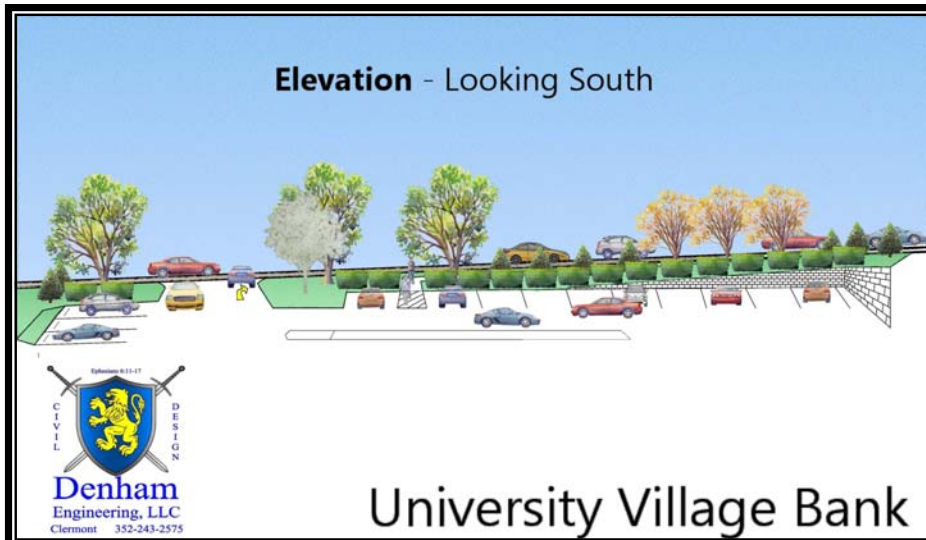


Orange Bank

Clermont, FL



We worked with both the master developer, broker and end user for this site to carve out a parcel that would work well for a bank. The owner was concerned that bank visibility from the SR50 would be limited by retaining walls, so we developed a rendering of the elevation view looking out the front door. Services included entitlement

through Clermont (Conditional Use, Site Plan), the SJRWMD (Storm Water), & FDEP (Potable Water & Sanitary Sewer).



Client
First Team Properties
Orange Bank

Contact
Brian Denham, P.E.
407-442-7426

Project Highlights
Location:
Clermont, FL
Project Size:
1 AC
4,600 SF Office

Services Included:

- Planning
- Color Renderings
- Entitlement
- Platting
- Consulting Engineering
- Storm Water Management Plans
- Utility Plans
- Civil Engineering
- Permitting
- Construction Administration