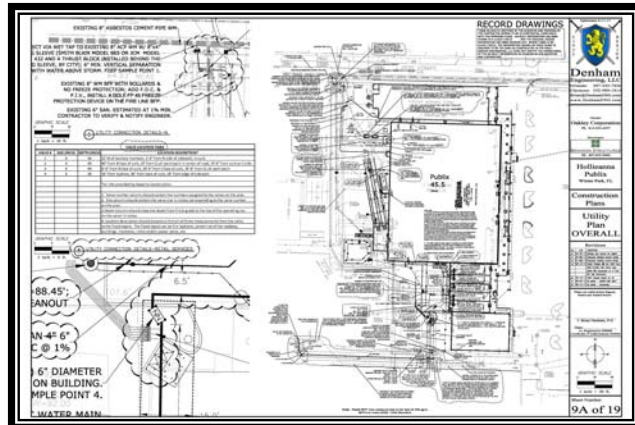


# Publix Hollicanna

## Winter Park, FL



Hollicanna Publix was known as "Store #20", established in 1962, and has seen many renovations over the years. This, combined with the

lack of accurate historical record drawings, required a flexible and creative design team that could overcome the many surprises found in the field. The Publix anchors an existing Tuesday's that had to remain in operation during construction as well as a new retail building. Design and construction had to be planned to function within operating businesses on all sides. Visibility on 17-92 make this one of Winter Park's most notable landmarks.

Services included entitlement through Winter Park (Site Plan, Storm Water & Utilities), the SJRWMD (Storm Water) & FDEP (Water & Sewer).

### Client

Brandon Partners

### Contact

Brian Denham, P.E.  
407-442-7426

### Project Highlights

Location:

Winter Park, FL

Project Size:

5 AC

45,000 SF Publix

6,000 SF Retail

### Services Included:

- Planning
- Consulting Engineering
- Storm Water Management Plans
- Utility Plans
- Civil Engineering
- Permitting
- Construction Administration



**Denham**  
Engineering, LLC