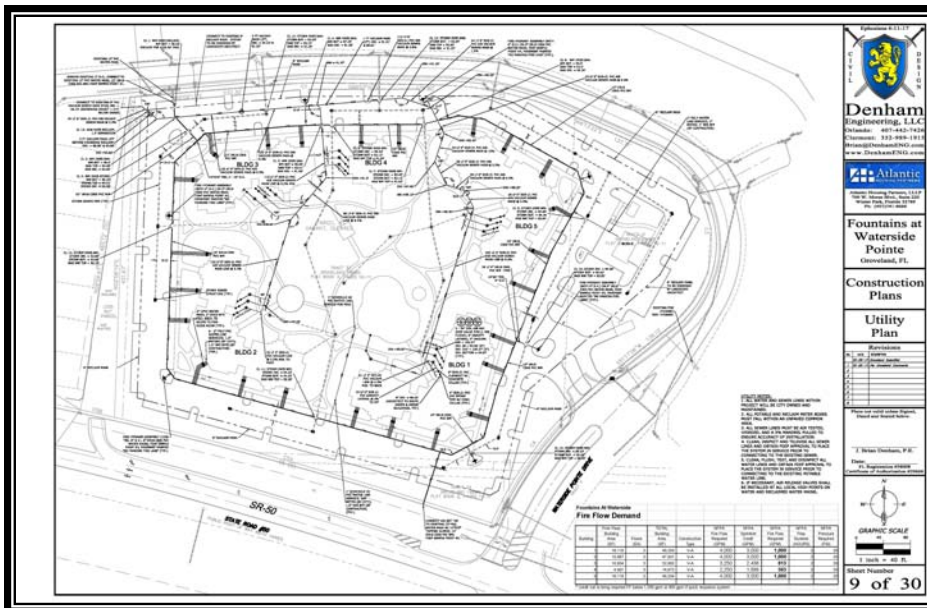
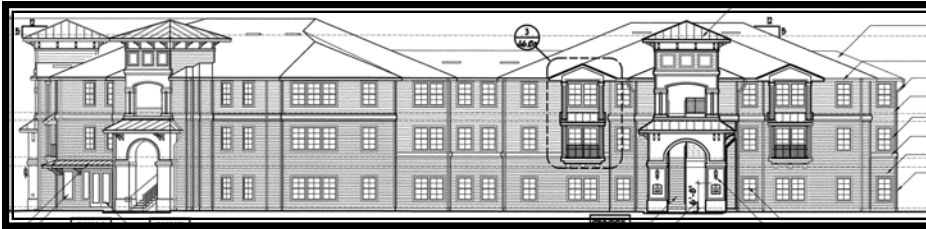


Fountains at Waterside

Groveland, FL



Client

Atlantic Housing Partners

Contact

Brian Denham, P.E.
407-442-7426

Project Highlights

Location:

Groveland, FL

Project Size:

10 AC

142 Units

Services Included:

- Planning
- Consulting Engineering
- Storm Water Management Plans
- Utility Plans
- Vacuum Sewer Design
- Civil Engineering
- Permitting

Fountains at Waterside in the City of Groveland is an affordable housing development incorporating a vacuum sanitary sewer system to minimize construction depths and eliminate lift stations on site. The existing site was a former sand mine and construction debris fill area, having a large amount of concrete under the surface, so the design had to avoid these areas. This project was designed in less than three months to meet the client's strict time frame stipulated by governmental tax credit funding guidelines. Services included entitlement through Groveland (PSP & Construction Plans), the SJRWMD (Storm Water), & FDEP (Potable Water & Sanitary Sewer).



Denham
Engineering, LLC